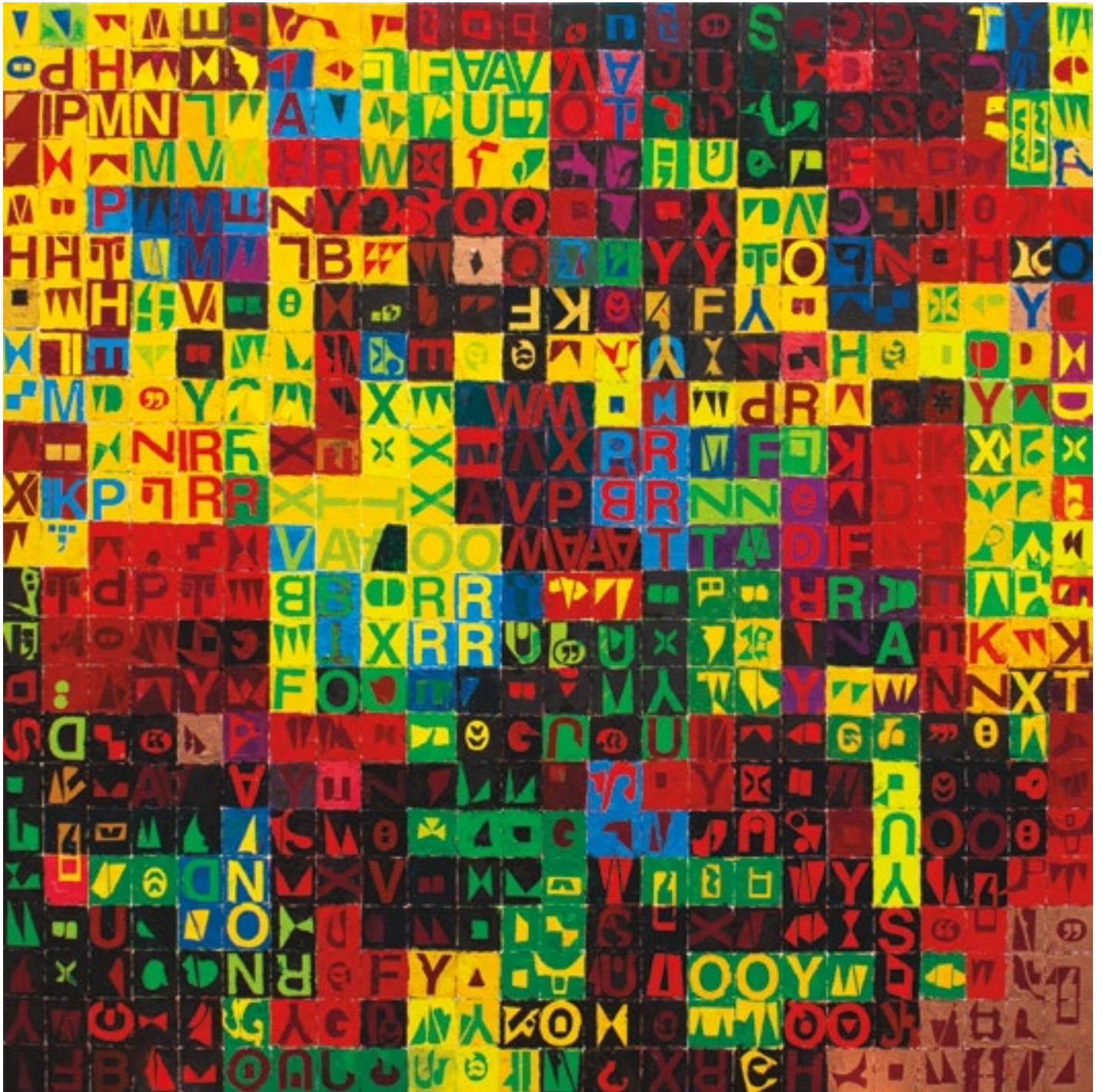


# sArta

SEATTLE ART DEALERS ASSOCIATION  
DECEMBER 2023





Dharma Strasser McColl, *LONG WAVE*, 2023, porcelain, mason stains, 27”h x 32”w x 1”d

## Winter Group Show

### Mary Josephson

*Plenty*

through December 23, 2023

First Thursday Artwalk: December 7, 5–8 pm

110 UNION STREET #200  
SEATTLE, WA 98101  
TRAVERGALLERY.COM  
206.587.6501



Gregg Laananen, *Sunflowers in a Studio Pottery Bowl*, oil on panel, 28.375 x 24.5 in.



Lois Silver, *The Right Key*, oil on board, 9 x 12 in.

## Winter Offerings

A Group Exhibition

December 7 - 30, 2023

Artists' Reception:  
First Thursday,  
December 7, 6-8 PM



Wendy Orville, *Winter Forest*, monotype, 12 x 12 in.

206.443.3315  
Tues - Sat 11:00-6:00  
staff@harrisharveygallery.com

harris/harvey  
GALLERY

1915 First Ave  
Seattle, WA 98101  
harrisharveygallery.com

through December 23

**Cris Bruch – *Garden Variety***

"First Thursday" Art Walk: December 7, 6–8pm



GARDEN VARIETY, 2023, ink on aluminum, 37.5 x 31.25 inches

through December 23

**Tim Roda – *Vantage Points***

"First Thursday" Art Walk: December 7, 6–8pm



UNTITLED #101, 2004, silver gelatin print, 20 x 24 inches, edition of 8



STILL UNTITLED #21, 2023, oil on silver gelatin, 20 x 24 inches

# 31st ANNUAL CELEBRATE ART GROUP EXHIBITION

DECEMBER 2023



Tyson Grumm, "High and Dry," acrylic on panel, 18 x 21.5 in.



Gabe Fernandez, "Pike Place Chinese #3," oil on panel, 20 x 30 in.



Ivy Jacobsen, "Let It Carry You," oil, acrylic & collage on panel, 48 x 48 in.



Marjorie Thompson, "Mixtape," acrylic on panel, 60 x 24 in.



Our Celebrate Art exhibition is in its 31st year, and especially in the midst of so much change and turmoil, what a blessing it is to have this longstanding tradition. PRG hopes to provide an experience that strengthens the bonds between our artists and collectors, our families and friends. We know that art has a unique ability to deepen our understanding of ourselves and the world around us. PRG invites you to be a part of this special month as we honor and celebrate the creative spirit that connects us all.



**PATRICIA ROVZAR GALLERY**

1111 1ST AVENUE, SEATTLE, WA 98101

www.rovzargallery.com | mail@rovzargallery.com | 206-223-0273

EST. 1992 Hours: Tues - Sat, 11am-5pm | **CLOSED FOR THE HOLIDAYS: December 24 - January 1**

Upcoming Exhibitions | Jan 2024: Jite Agbro | Feb: Danny Perkins & Richard Royal | Please contact the gallery to join Collector Preview List

SELECTIONS FROM THE COLLECTION



Marc Chagall, *Frontispiece for Le Plafond de l'Opéra de Paris*. Color lithograph.

THROUGH DECEMBER



William Song, *Community Series 31*, oil on canvas, 48x36 in

**FIELDS**  
of  
**COLOR**

WILLIAM SONG  
MARCIO DÍAZ

DECEMBER 1, 2023-  
JANUARY 20, 2024



Marcio Díaz, *Detail of Born in Color*, acrylic on canvas, 48x60 in

ART X  
CONTEMPORARY

512 1ST AVE SOUTH,  
SEATTLE, WA 98104  
206-839-0377  
ARTXCONTEMPORARY.COM

DAVIDSON GALLERIES

BUSINESS PURCHASE INQUIRIES WELCOME  
313 Occidental Ave S | Seattle, WA 98104 | 206-624-7684  
Tuesday-Saturday 11am-5:30pm | www.davidsongalleries.com



Nov 30 - Dec 31  
Artist Reception- Sat Dec 2nd, 4 - 6 pm



BRATSA  
BONIFACHO  
*NO SUGAR  
ADDED*  
DEC 2023 - JAN 2024

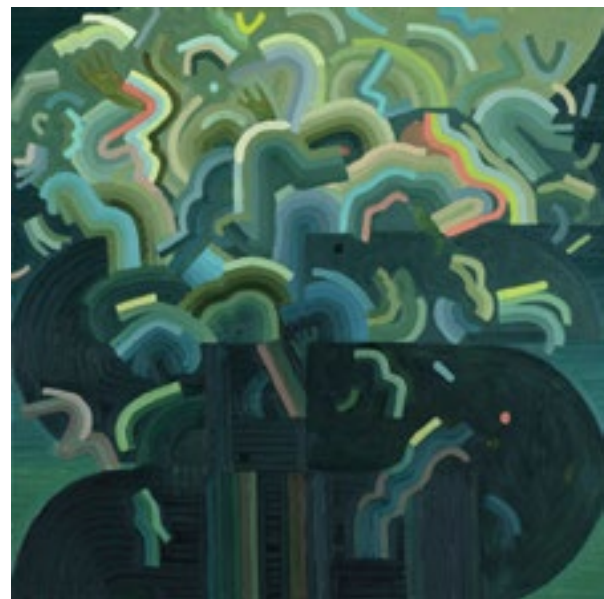


Michele Rushworth- *Dynamic*, oil, 36 x 36



Anne Belov- *Harmony of Home*, oil, 16 x 18

Above: Bratsa Bonifacho, *Zonab X*, oil and acrylic on canvas, 48 x 48 inches. Below left: Ilana Zweschi, *Confined*, oil on canvas, 23.75 x 24.25 inches. Below right: Carol Inez Charney, *After Vincent Van Gogh: Irises II*, chromogenic print with luster laminate on aluminum, 28 x 20 inches.



SMALL  
WORKS  
GROUP  
EXHIBITION  
BY GALLERY  
ARTISTS  
DEC 2023

220 THIRD AVE S  
SEATTLE WA 98104  
FOSTERWHITE.COM



Christine Gedye- *Shinrin- Yoku*, oil, 30 x 30



Scott Lantz- *Promenade*, acrylic, 24 x 18



**Fountainhead**  
GALLERY

FountainheadGallery.com • 206.285.4467 • 625 W. McGraw St, Seattle WA 98119



**SADE is a publication of the  
 Seattle Art Dealers Association (SADA).  
[seattleartdealers.com](http://seattleartdealers.com)**

- Galleries with display pages and map placement.
- Galleries with map placement.

- 1 ARTX CONTEMPORARY**  
512 1st Ave S • 206-839-0377 • [artxcontemporary.com](http://artxcontemporary.com)
- 2 DAVIDSON GALLERIES**  
313 Occidental Ave S • 206-624-1324 • [davidsongalleries.com](http://davidsongalleries.com)
- 3 FOSTER/WHITE GALLERY**  
220 3rd Ave S • 206-622-2833 • [fosterwhite.com](http://fosterwhite.com)
- 4 FOUNTAINHEAD GALLERY**  
625 W McGraw St • 206-285-4467 • [fountainheadgallery.com](http://fountainheadgallery.com)
- 5 GALLERY IMA**  
123 South Jackson St • 206-625-0055 • [galleryima.com](http://galleryima.com)
- 6 GREG KUCERA GALLERY**  
212 3rd Ave S • 206-624-0770 • [gregkucera.com](http://gregkucera.com)
- 7 HARRIS HARVEY GALLERY**  
1915 1st Ave • 206-443-3315 • [harrisharveygallery.com](http://harrisharveygallery.com)
- 8 PATRICIA ROVZAR GALLERY**  
1111 1st Ave • 206-223-0273 • [rovzargallery.com](http://rovzargallery.com)
- 9 STONINGTON GALLERY**  
125 S Jackson St • 206-405-4040 • [stoningtongallery.com](http://stoningtongallery.com)
- 10 TRAVER GALLERY**  
110 Union St, 2nd Fl • 206-587-6501 • [travergallery.com](http://travergallery.com)
- 11 WOODSIDE/BRASETH GALLERY**  
1201 Western Ave, Ste 105 • 206-622-7243 • [woodsidebrasethgallery.com](http://woodsidebrasethgallery.com)