

sArta

SEATTLE ART DEALERS ASSOCIATION
SEPTEMBER 2022



“Bridge,” oil on canvas, 48 x 36 in.
Z.Z. WEI Exhibiting at Patricia Rovzar Gallery





Florescence, 2021, acrylic on canvas, 40 x 40 inches

**CHIN
YUEN**
ELEVATION

SEPT 1 - OCT 22, 2022

Pioneer Square Art Walk & Artist Reception:
September 1st, 5-8pm

ARTXCHANGE
GALLERY

512 1ST AVE S, SEATTLE, WA 98104 / 206.839.0377
WWW.ARTXCHANGE.ORG / INFO@ARTXCHANGE.ORG

ANNE BELOV
Constant Companions
September 1 - 24



All He Surveys, oil on canvas, 40 x 48 inches, 2022

Artist Reception
Saturday September 10th, 5 - 7 pm



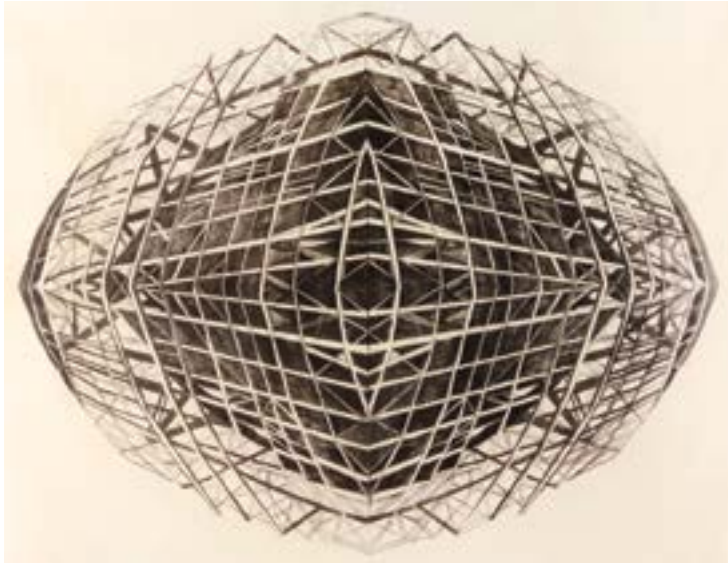
Fountainhead

GALLERY FountainheadGallery.com · 206.285.4467 · 625 W. McGraw St, Seattle WA 98119

JENNY ROBINSON

Fragile Symmetry

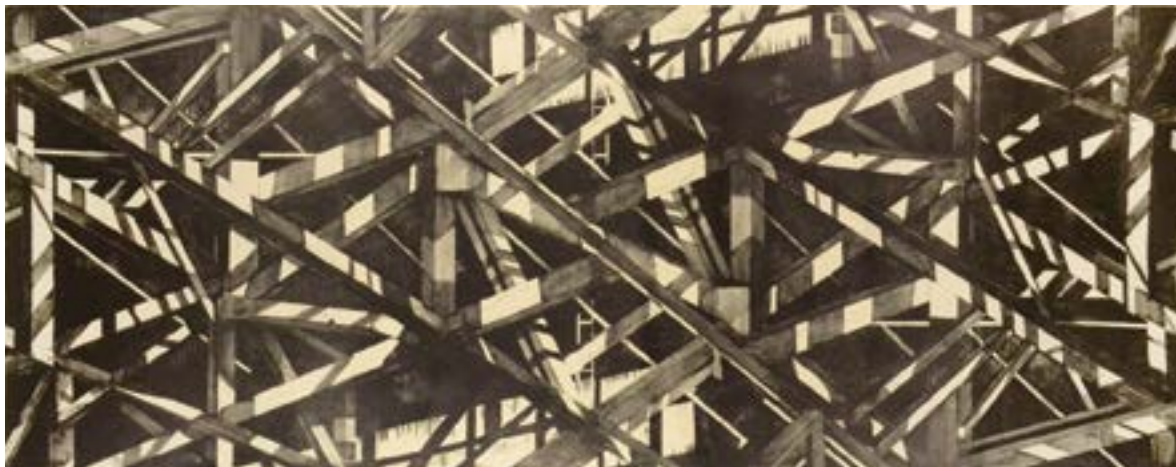
SEPTEMBER 2 – OCTOBER 29



Jenny Robinson, *Fragile Infrastructure*.
Drypoint on Kitakata paper, backed with Sekishu. 23½ x 30½ inches.



Jenny Robinson, *Rotondo #6*.
Drypoint on mulberry paper. 23¾ x 23¾ inches.



Jenny Robinson, *Winters Light, Hunters Point*.
Stone lithograph. 28¼ x 71¼ inches.

ARCHITECTURE IN ART

SEPTEMBER 2 – OCTOBER 29



Caroline Armington, *Ponte Dei Sospiri, Venice.*
Etching. 14 x 10 1/8 inches.



Herbert Warlow, *Notre Dame De Rouen.*
Etching. 8 1/2 x 6 5/8 inches.

ROBERT CONNELL

As I See It
THROUGH OCTOBER 1



Robert Connell, *Blackberry Briars.*
Sumi ink and gouache on paper. 22 x 30 inches.



Robert Connell, *Old Cabin.*
Sumi ink and gouache on paper. 22 x 30 inches.

FOSTER/WHITE GALLERY



Above: Calvin Ma, *Between The Lines*, ceramic, glaze, 17 x 17 x 8 inches.

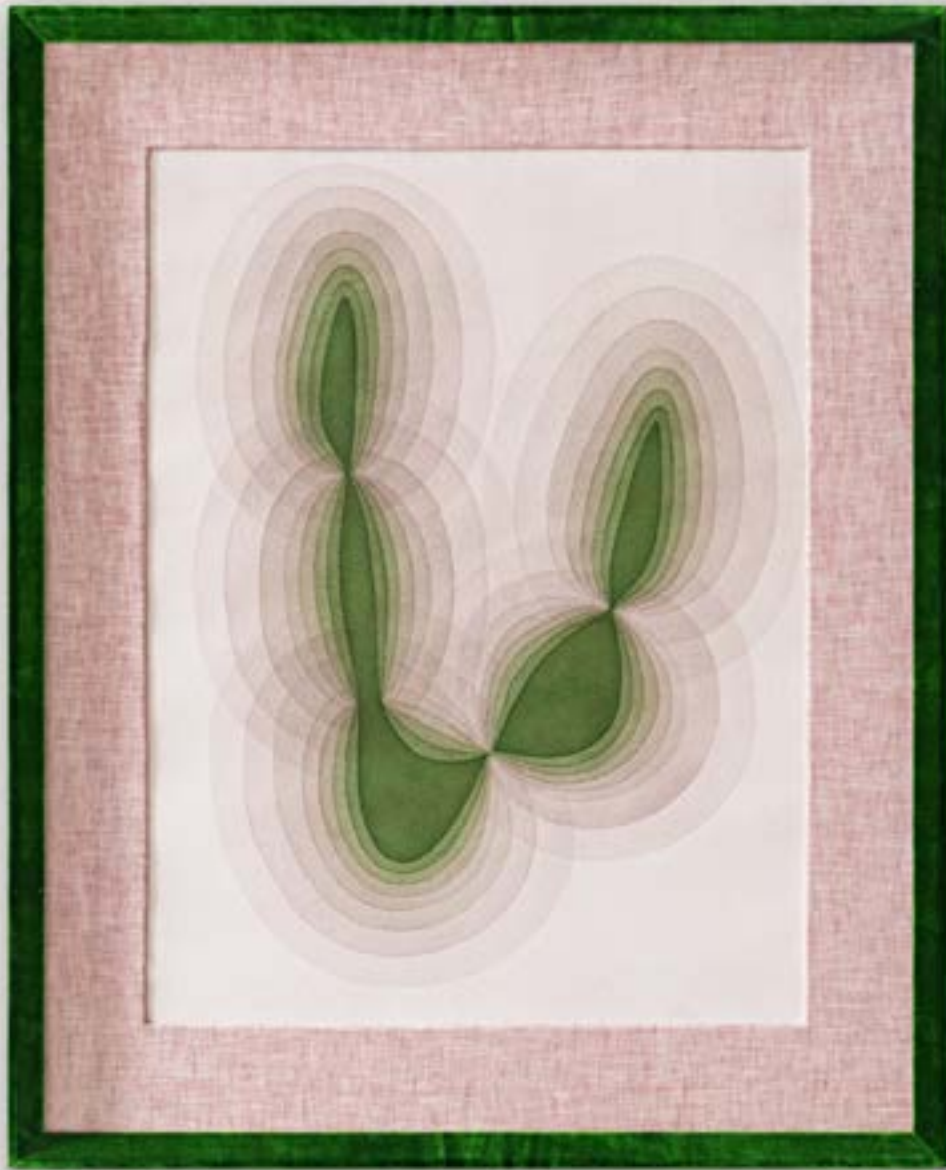
Opposite, top to bottom: Calvin Ma, *New Growth*, ceramic, glaze, 20 x 16 x 5 inches. Calvin Ma, *Watch Your Step*, ceramic, glaze, 14 x 13 x 11 inches.

CALVIN MA

BLEND IN: BETWEEN THE LINES

SEPTEMBER 2022





Curtis Steiner, #0094, 2022, 21 x 17 x 1 inches, watercolor on paper with hand-made linen and velvet frame

Heike Brachlow *Colour Connections*

Curtis Steiner *Sentient*

September 1 – October 1, 2022

Opening Reception: September 1, 5-8 PM

110 UNION STREET #200

SEATTLE, WA 98101

TRAVERGALLERY.COM

206.587.6501

**TRAVER
GALLERY**



GREGG LAANANEN

Shorthand

KAREN KOSOGLAD

Simultaneity

September 1 - October 1

Artists' Reception:
First Thursday,
September 1, 6-8 PM

Left: Gregg Laananen, *Going to Seed*, oil on panel, 24 x 22 in.
Right: Karen Kosoglad, *Wysdom and Reflection 2*, mixed media on board, 30 x 24 in.



206.443.3315
Tues - Sat 11:00-6:00
staff@harrisharveygallery.com

harris/harvey
GALLERY

1915 First Ave
Seattle, WA 98101
harrisharveygallery.com

September 1 – October 29

Humaira Abid – *Fight Like a Girl*

Opening reception: Thursday, September 1, 6–8pm

Artist talk: Saturday, October 8 at noon



Artist News:

Humaira Abid

Migration

Civic Museum of

Palazza della Penna

Perugia, Italy

September 3 - October 9

Juventino Aranda

Juventino Aranda: Esperé Mucho

Tiempo Pa Ver

One-person exhibition

Jordan Schnitzer Museum of Art

Washington State University

Pullman, WA

August 23 - March 11, 2023

Whiting Tennis

Joey Veltkamp

Indie Folk: New Art and Sounds from the Pacific Northwest

Schneider Museum of Art

Southern Oregon University

Ashland, OR

through August 13

Bellevue Arts Museum

Bellevue, WA

September 9 - January 29, 2023

Joey Veltkamp

SPIRIT!

One-person exhibition

Bellevue Arts Museum

Bellevue, WA

through October 23, 2022

Anthony White

2021 Betty Bowen Award Winner

One-person exhibition

Seattle Art Museum

Seattle, WA

August 5 - January 29, 2023

Upcoming exhibitions:

October 6 - October 29

Paul Horiuchi

November 3 - December 23

Anthony White



Above: *TEMPTING EYES XVI*, 2021, carved pine wood, pigment on handmade wasli paper and plexiglass, 9 x 4.5 x 4 inches

Below: Detail of *THIS WORLD IS BEAUTIFUL, AND DANGEROUS, TOO I*, 2017-2022, carved pine wood with stain, pigment on handmade wasli paper and plexiglass, 130 x 36 x 36 inches



Left: WOMAN IN BLACK, 2022, carved pine wood, pigment on handmade wasli paper, and plexiglass, 62 x 24 x 12 inches
Right: Details of WOMAN IN BLACK, 2022

GREG KUCERA GALLERY 212 THIRD AVENUE S
SEATTLE, WA 98104
206.624.0770
www.gregkucera.com
staff@gregkucera.com

Z. Z. WEI

30 Year Odyssey: Exploring American Landscapes

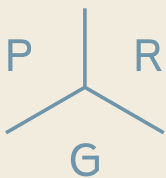
SEPTEMBER 6 - 29, 2022

Artist Meet & Greet: Saturday, September 10, 3-5pm



Verdant Grassland, oil on canvas, 40 x 80 in.

Over the past 30 years, Z.Z. Wei has been proud to reach so many people through his paintings. While the artist cannot speak English, he communicates through his work, often using the bridge itself as a metaphor for the connections between his thoughts and images. The works in this milestone exhibition capture the longstanding interest Z.Z. Wei has had in rural America. This landscape has been important throughout his career, acting as a conduit to a lifestyle that is more intimate and connected to nature.



PATRICIA ROVZAR GALLERY

1111 1ST AVENUE, SEATTLE, WA 98101

Celebrating 30 Years



Heartland, oil on canvas, 72 x 72 in.

UPCOMING EXHIBITIONS

October: Terry Turrell

November: Kellie Talbot

PLEASE CONTACT THE GALLERY TO JOIN ARTIST PREVIEW LISTS



www.rovzargallery.com

mail@rovzargallery.com

206-223-0273

Hours: Tues - Sat, 11am -5pm

SYLWIA TUR

September 1-October 1, 2022

FIRST THURSDAY: September 1, 6-8 pm



English Alphabet, 2022, porcelain, 37" x 22" x 11"

LINDA HODGES GALLERY

316 First Avenue South, Seattle, WA 98104 | 206 624 3034
www.lindahodgesgallery.com | Tuesday-Saturday 10:30-5:00

FOUR ON THE FLOOR

Joe Max Emminger / Lisa Golightly / Daphne Minkoff / Jenny Beedon Snow



Summer Picnic Green Lake, 2021, acrylic on paper, 30" x 44"



Boys in the Boat, 2022, acrylic on panel, 12" x 16"



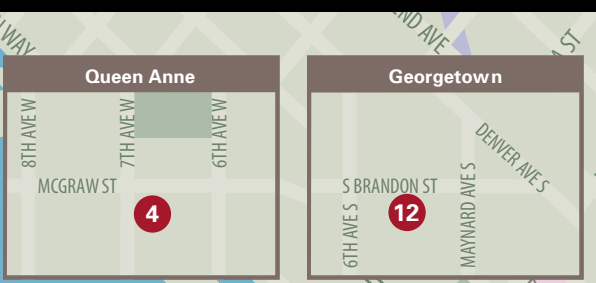
Facade of Convenience: View 2, 2022, collage, oil on canvas over board, 18" x 24"

**CELEBRATING
40 YEARS**

UPCOMING EXHIBITIONS

OCTOBER: Cable Griffith

NOVEMBER: Michael Brophy



SADE is a publication of the
 Seattle Art Dealers Association (SADA).
seattleartdealers.com

- Galleries with display pages and map placement.
 - Galleries with map placement.
- 1 ARTXCHANGE GALLERY**
 512 1st Ave S • 206-839-0377 • artxchange.org
 - 2 DAVIDSON GALLERIES**
 313 Occidental Ave S • 206-624-1324 • davidsongalleries.com
 - 3 FOSTER/WHITE GALLERY**
 220 3rd Ave S • 206-622-2833 • fosterwhite.com
 - 4 FOUNTAINHEAD GALLERY**
 625 W McGraw St • 206-285-4467 • fountainheadgallery.com
 - 5 GALLERY IMA**
 123 South Jackson St • 206-625-0055 • galleryima.com
 - 6 GREG KUCERA GALLERY**
 212 3rd Ave S • 206-624-0770 • gregkucera.com
 - 7 HARRIS HARVEY GALLERY**
 1915 1st Ave • 206-443-3315 • harrisharveygallery.com
 - 8 J. RINEHART GALLERY**
 319 3rd Ave S • 206-467-4508 • jrinehartgallery.com
 - 9 LINDA HODGES GALLERY**
 316 1st Ave S • 206-624-3034 • lindahodgesgallery.com
 - 10 PATRICIA ROVZAR GALLERY**
 1111 1st Ave • 206-223-0273 • rovzargallery.com
 - 11 STONINGTON GALLERY**
 125 S Jackson St • 206-405-4040 • stoningtongallery.com
 - 12 STUDIO E**
 609 S Brandon St • 206-762-3322 • studioegallery.net
 - 13 TRAVER GALLERY**
 110 Union St, 2nd Fl • 206-587-6501 • travergallery.com
 - 14 WOODSIDE/BRASETH GALLERY**
 1201 Western Ave, Ste 105 • 206-622-7243 • woodsidebrasethgallery.com